

# Fleet Information System

Web-based ship registration  
and tracking application.



# Fleet Information System

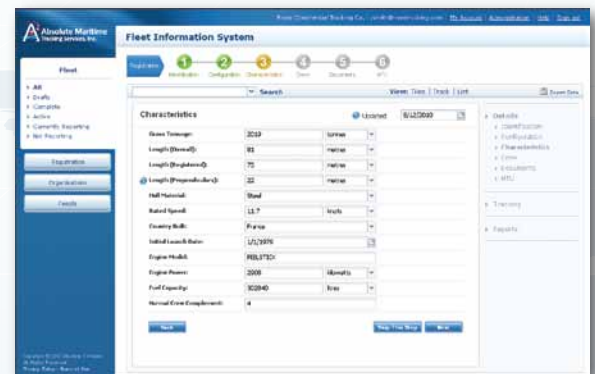
Absolute Maritime Tracking Services (AMTS) is pleased to announce a new Fleet Information Service for shipowners that combines state-of-the-art fleet management, reporting and tracking tools within a single web-based application. Our service assists shipowners with improving operational efficiency, provides enhanced safety & security at-sea and is backed by a live 24x7x365 support staff dedicated to supporting anti-piracy measures.

AMTS designed and operates the largest National Data Center within the International Maritime Organization's Long-range Identification & Tracking (LRIT) network. Our systems are widely acknowledged as the standard by which the industry is measured. With the launch of the Fleet Information System, we are now making a comparable caliber product available to merchant maritime operators for the first time.

## On-Line Registration

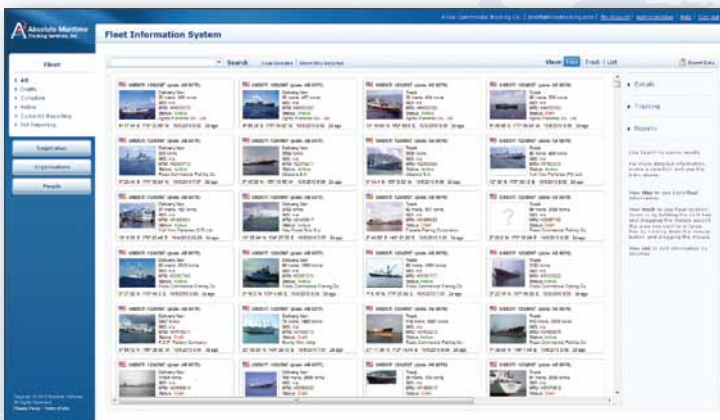
Ship owners (or their agents) join the system by providing their company information; including D-U-N-S® number or other Proof of Corporate Registration. After approval, each organization designates an account manager who is then able to manage the organization's profile, register ships and select permissions for other users in that organization. The system is secure - users may only view ships they have been granted access to.

Registering a ship requires confirmation of basic information using an intuitive user-interface. Required details include the ship identification (i.e. name, callsign, flag state), characteristics (type, length, tonnage, etc) and the operating areas of the ship, as well as identifying the GPS equipped satellite equipment that will be used for tracking purposes. We support a wide variety of Inmarsat-C, IsatM2M and Iridium equipment.



## Comprehensive Search Engine

Once a fleet is registered, authorized users can select ships from a list or search using the full-text search engine to view a ship's details, documents and status. The Fleet Information Service also provides a facility to enter email address(es) that should be automatically notified if the tracking equipment ceases reporting for any reason.



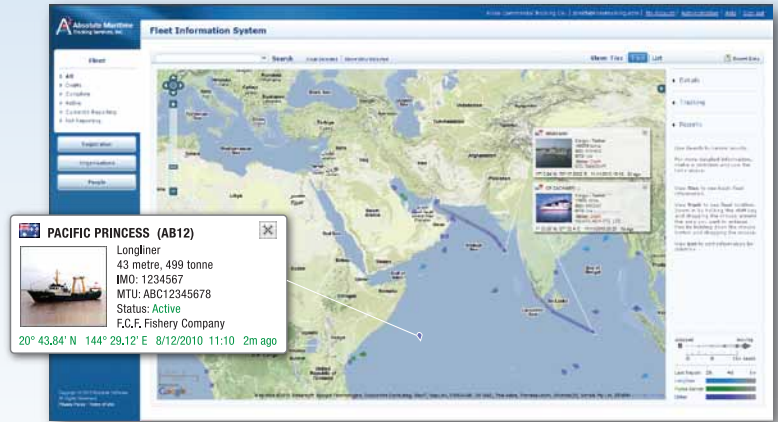
Email notifications\* may also be configured based on a range of criteria including ships arriving and departing ports, unexpected slowdowns or stoppage at-sea or upon entry/exit to areas with a high known risk of piracy. This information is presented visually and can also be downloaded in various formats for import into standalone spreadsheet or similar programs.

\* Additional email alerts are scheduled for introduction during 2011

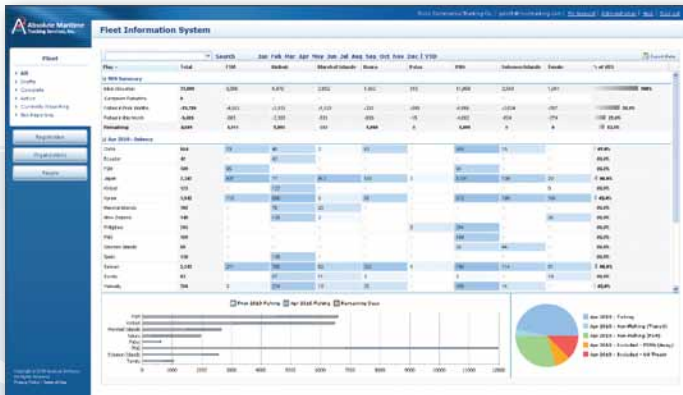
## Ship Tracking

The Fleet Information System includes an integrated high performance Geographic Information System (GIS) offering on-line fleet management and analytical tools. Users are able to select between 2D and 3D views, with full integration with a variety of geospatial data sources.

The standard service provides four reports per day. Requests for specific reporting intervals (i.e. one hour) can also be made for a small additional charge. Position data is available both in real-time and on a historic basis.



For clients who wish to share read-only access to this view with partners or suppliers they can do so; on either a permanent or time-limited basis (i.e. for the duration of a charter).



## Reporting

The Fleet Information System contains a fully integrated Trip Reporting System. This reporting system automatically captures arrival and departure from most major port facilities worldwide, and provides a number of tools to view duration and length of voyages and departure and arrival points.

A document management system is provided, which supports the upload of photos and scanned document pertaining to the ship.

By uploading documents (such as the Flag Certificate, Safety Certificates and photographs) to the Fleet Information System it is possible to share them with selected partners including agents or charterers. All documents are stored securely and version managed, with a history of all changes and updates available.

## Security & Access Controls

The application is hosted under SSL encryption, protecting any data submitted or retrieved during the session from interception or tampering by third parties. Strong access controls segment personal and business data from other users of the application, facilitating regulatory and surveillance activities. The system is designed from the ground up to keep data secure and confidential.

## Conclusion

The Fleet Information System brings the benefits of the Long-range Identification & Tracking system to shipowners. At present we are working with a select group of shipping operators to test and refine this system. It is anticipated that the Fleet Information Service will become generally available in early 2011.

For further contact information and inquiries, please refer to the details on the reverse of this brochure.



Absolute Maritime Tracking Services Inc (AMTS) is a technology and innovation leader specializing in Maritime Safety, Maritime Security and Vessel Tracking for homeland security and environmental protection and other maritime government markets throughout the world. With a history of innovation, AMTS provides and operates mission critical systems in the areas of long range ship tracking, utilizing multiple sensor technologies such as satellite communications, AIS and radar.

AMTS designed and operates the largest National Data Center within the International Maritime Organization's Long-range Identification & Tracking (LRIT) network. Our LRIT systems are widely acknowledged as best of breed and the standard on which the industry is measured. With the launch of the new Fleet Information System, we are making available for the first time a comparable product for commercial fleet operators that combines state-of-the-art fleet management, reporting and tracking tools within a single web-based application.

## Contact Us

**Absolute Maritime  
Tracking Services, Inc.**  
City of Knowledge, No 221  
Panama City, Republic of Panama  
T: + 507 301-5748  
info@absolutemaritime.com

**Absolute Software**  
101 Federal Street, 19th Floor  
Boston, MA 02110  
United States  
T: +1 617 800 9367  
sales@absolutesw.com

Australia: T: +61 (7) 3121 3079

Asia: T: +66 2231 8249