



# Fleet Information System

Web-based ship registration  
and tracking application.

# Fleet Information System

The Fleet Information System (FIS) assists governments implementing *eGovernment* initiatives requiring on-line replacement of existing paper-based processes. FIS is a secure web-based application that includes modules for registering and tracking ships, generating reports, and managing permits and licenses.

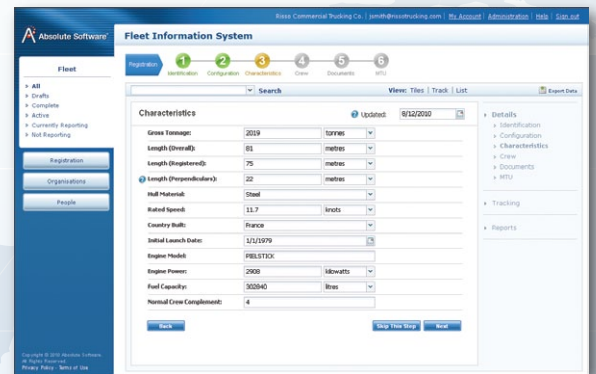
The Fleet Information System is suitable for internal users, external users (such as shipowners or permit holders), and for agency-to-agency arrangements (such as federal/commonwealth and state data sharing arrangements). The system runs on open-source software and adheres to open standards for the interchange of data; i.e. Open GIS Consortium standards and IMO technical specifications\*. It is designed to interface with existing software developed in-house by clients – acting as the ‘gateway’ to web-enable such internal databases securely.

Absolute Software is currently launching the FIS for two clients; the *Pacific Islands Forum Fisheries Agency*, and the *Panama Maritime Authority* for use with over 10,000 ships. FIS will allow these clients to bring existing paper-based workflows online; all within a secure state-of-the-art web 2.0 application.

## On-Line Registration

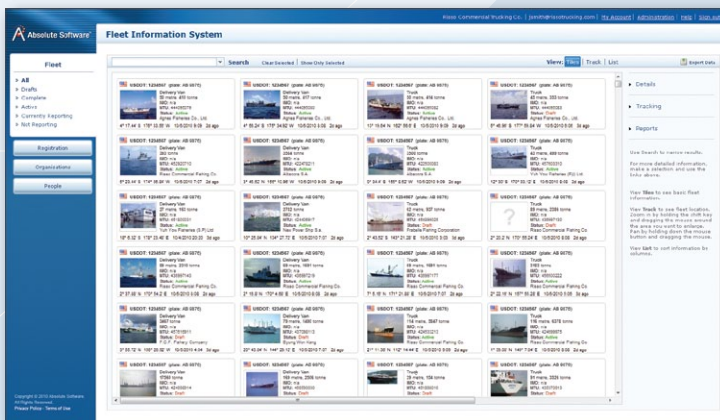
Organizations, such as ship owners or industry groups, join the system by providing their company information; such as DUNS number and Proof of Corporate Registration. After approval, these organizations designate an account manager who is then able to manage the organization’s profile, register ships, and select permissions for other users in that organization. Fine-grained permissions restrict which organizations and users have access to specific functions within the system and which ships they are able to view.

Registering a ship commences with entering information about the ship and uploading photos & documents via an intuitive user-interface. The exact requirements are configurable by the systems administrator; these include ship Identification (i.e. name, callsign, flag state, etc), Gear Type, Characteristics (length, tonnage, etc), Crew complement and Mobile Transceiver Unit (MTU). Uploaded photos & documents typically include a side view and plan view of the ship, stowage plans and the Flag State Registration Certificate.



## Comprehensive Search Engine

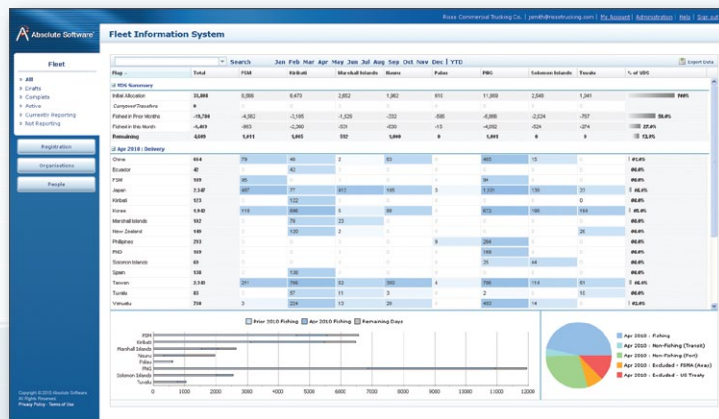
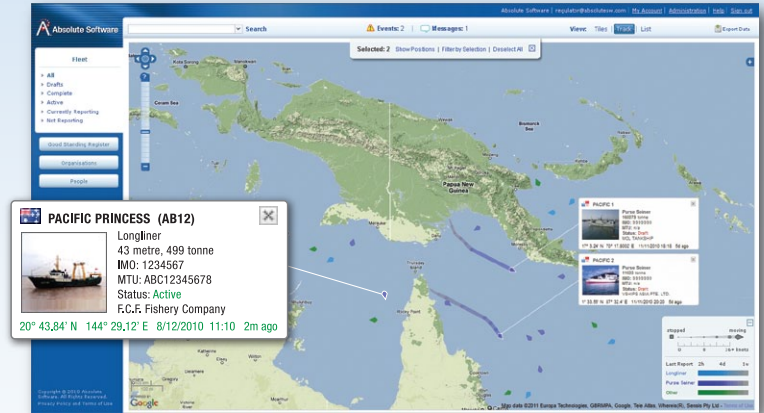
Once an organization’s fleet is registered, authorized users can select ships from a list or search using the full-text search engine to view a ship’s details, documents and status. A complete history of all changes made to information or documents is maintained; providing a stable foundation for use of the system as legal evidence. Audit capabilities include both access (view) and changes (edits/updates) of information.



\* International Maritime Organization LRIT technical specifications

## Ship Tracking

FIS can monitor up to 32,000 vessels simultaneously; using any combination of supported satellite and cellular networks. The integrated high performance Geographic Information System (GIS) provides fleet management and analytical tools that are fully compliant with all Vessel Monitoring System (VMS) and Long-Range Identification and Tracking (LRIT) requirements.



## Electronic Forms

The Fleet Information System contains a fully integrated Catch Monitoring & Reporting System. Absolute's real-time catch monitoring system provides the ability to manage catch & effort levels remotely and in real time. Other form types include notice of port call and arrival documentation. Reporting is fully integrated within the Fleet Information System and runs on any mobile data terminal that supports the Absolute Electronic-Forms software package; including leading

products from several Inmarsat and Iridium equipment manufacturers. The Fleet Information System's Reporting System provides FIS users with instant access to catch, arrival/landing documentation; and other operational metrics to all levels within the organization in a scalable and secure environment.

## Security & Access Controls

The application is hosted under SSL encryption, protecting any data submitted or retrieved during the session from interception or tampering by third parties. Strong access controls segment personal and business data from other users of the application, facilitating regulatory and surveillance activities. Auditors can determine if and when specific information (i.e. a crew list) was retrieved and viewed by a given surveillance officer and if any edits or updates were performed. The entire system is designed from the ground up for use in evidentiary and law enforcement environments.

## Conclusion

Deployment of the Fleet Information System commences with a requirements analysis. This includes consideration of existing systems that are in-use, with interfaces specified for those that will be retained and data migration plans developed where appropriate. Our consultants then prepare a detailed plan for introduction of the Fleet Information System, with the assurance that all existing client data will be properly and securely handled throughout the transition process. This concludes with configuration of a full test and training environment, such that all capabilities can be demonstrated prior to deployment.



## Absolute Software

[www.absolutesw.com](http://www.absolutesw.com)

Absolute Software provides solutions to monitor the location of mobile assets – in the air, on land or at sea - on a worldwide basis. Our work with The Ford Motor Company, the United States Department of Homeland Security, Pacific Forum Fisheries Agency and others has given Absolute a broad and unique understanding of the cellular and satellite communications marketplace. We use this knowledge to develop industry leading solutions and deploy these in over 20 countries worldwide.

### Contact Us

#### **Absolute Software**

101 Federal Street  
19th Floor  
Boston, MA 02110  
United States  
T: +1 617 800 9367  
[sales@absolutesw.com](mailto:sales@absolutesw.com)

#### Asia:

T: +66 2231 8249

#### Australia

T: +61 7 3121 3079

#### Panama:

T: +507 301 5748