



Fleet Information System

Web-based logistics
and tracking application.



Fleet Information System

Absolute Software is pleased to announce our new Fleet Information Service. With features including state-of-the-art GPS tracking, dispatching, route planning, fleet management and RFID cargo monitoring - this system is particularly suited for use in the Transportation, Oil & Gas, Mining and Public Safety sectors.

For over ten years Absolute has developed large scale vehicle location systems for use in demanding applications including motorcade and protected persons security, police vehicle tracking and a range of custom cargo and RFID applications. With the launch of the on-line Fleet Information System we are now making our product range available to small and mid-size fleet operators also.

Customer's report that the Fleet Information System has helped them improve operational efficiency and provide important safety and security benefits to drivers. As with all Absolute's products, this service is backed by our live 24x7x365 support.

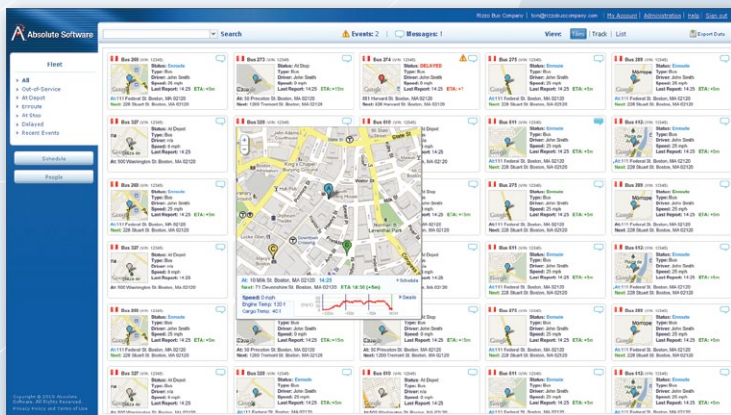
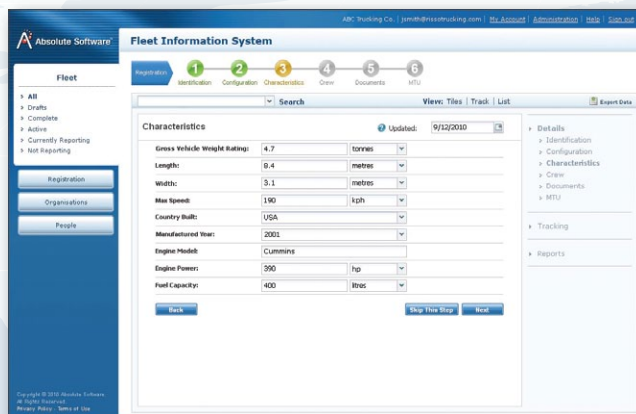
Registration & Access

The Fleet Information System is securely hosted within the cloud - with all data stored within a fully redundant set of datacenters. Access to the system is via any major Internet Web Browser, including Internet Explorer 8+, Chrome 8+, Firefox 3.5+ or Safari 4.0+.

To obtain access to the Fleet Information you first register your organization and designate an account manager. The account manager can then add other users, register vehicles and specify access levels and permission. The system is secure - users may only view the vehicles they have been granted access to.

Registering a vehicle requires entry of basic information through an intuitive user-interface. Typical details include the vehicle identification (i.e. VIN, plate numbers) and characteristics (type, length, weight). There is a related facility for uploading any documents/certificates you wish to make conveniently available to your users; such as Department of Transport licenses, hazardous chemical licenses and endorsements or tax certificates.

All information can be downloaded in various formats for import into standalone spreadsheet programs. For customers with in-house logistics applications, we provide a web-based Application Programming Interface (API) to integrate this information.



Information at Your Fingertips

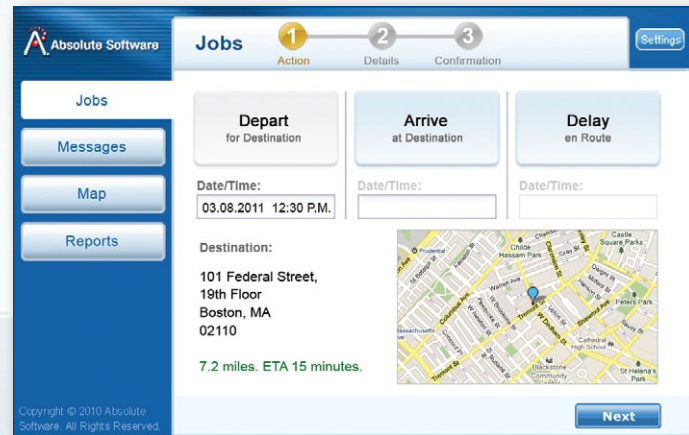
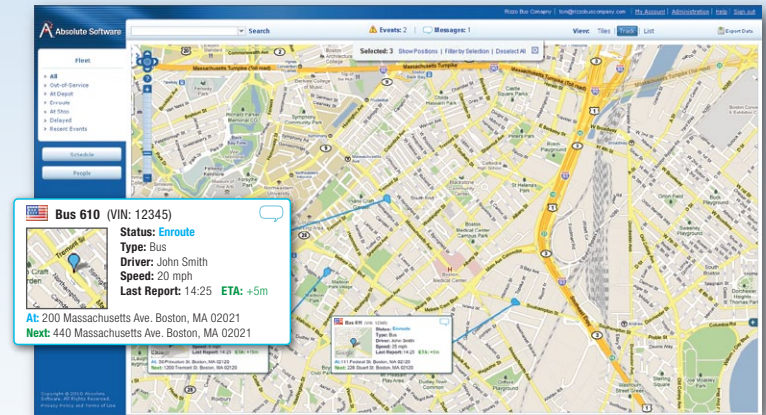
Once a fleet is registered, your authorized users can search using the full-text search engine to view current location, job status and vehicle details.

The system provides a facility to enter email addresses for notification of significant events; such as arrival and departure from designated areas; jobs being dispatched, started or completed. A complete set of driver and vehicle performance metrics are available, including overspeed, unexpected slowdowns or deviations from the expected route.

* Requires additional in-vehicle hardware.

Vehicle Tracking

The core of the Fleet Information System is an integrated high performance Geographic Information System (GIS) offering market leading on-line fleet management and analytical tools. Users are able to select between 2D and 3D views, with full integration with a variety of geospatial data sources. The standard service provides hourly reporting. Requests for specific reporting intervals (i.e. 5 minutes) can also be made for a small additional charge. Position data is available both in real-time and on a historic basis.



Job Dispatching & Cargo Monitoring

For in-vehicle use we support several hardware options; from GSM solutions for in-city use to satellite options for remote monitoring under harsh environmental conditions (via the Iridium, IsatM2M and Inmarsat-C networks).

GPS is used to track vehicles. Active RFID tags extend this tracking capability down to the container, pallet or individual cargo unit. Absolute's system includes proprietary algorithms for combining GPS and RFID data; to more accurately match the correct cargo/pallets/containers/trailers with the vehicle carrying them. We support both J1939 (CANbus) and digital sensor inputs to capture performance data such as speed, braking and fuel consumption.

The Fleet Information System contains a fully integrated trip reporting system.* Jobs can be entered, prioritized and dispatched. Routing and estimated time-of-arrival functions are provided through the integrated Google® Maps API – with a professional subscriptions to this service automatically included. For Fleet Managers, the data collected provides useful indicators on total mileage, fuel consumption or engine check indications.

Security, Access & Integration

The application is hosted under SSL encryption, protecting all data submitted or retrieved during the session from interception or tampering. Strong access controls segment personal and business data from other users of the application. Our system is designed from the ground up to keep all client data secure and confidential. We take your privacy seriously and all details provided are used only to supply this service to you. We do not sell or otherwise provide your contact details or email to third parties for marketing purposes.

Conclusion

The Fleet Information System provides a complete set of tools to manage your fleet more efficiently.

For further information, and to arrange a demonstration of Absolute's market leading solution, please email us at sales@absolutesw.com, or see the back page of this brochure. If you would prefer to contact us by phone, our office locations are also found on the reverse of this brochure.